



# new bauhausmuseum weimar

weimar and the bauhaus university are searching for a concept of a new bauhaus museum and advertised an partly opened competition with a highly frequented site near the inner city is placed at the disposal. furthermore there is given a detailed space allocation plan via the competitions committee.

## project data

type	museum
size	6200m <sup>2</sup>
location	weimar, germany
status	idea
team	martin meyer rick schneider david krauße
timeline	1st master semester, 2012





weimar atrium and weimar townhall as solitaires



residential structures divided into small sections in north-west

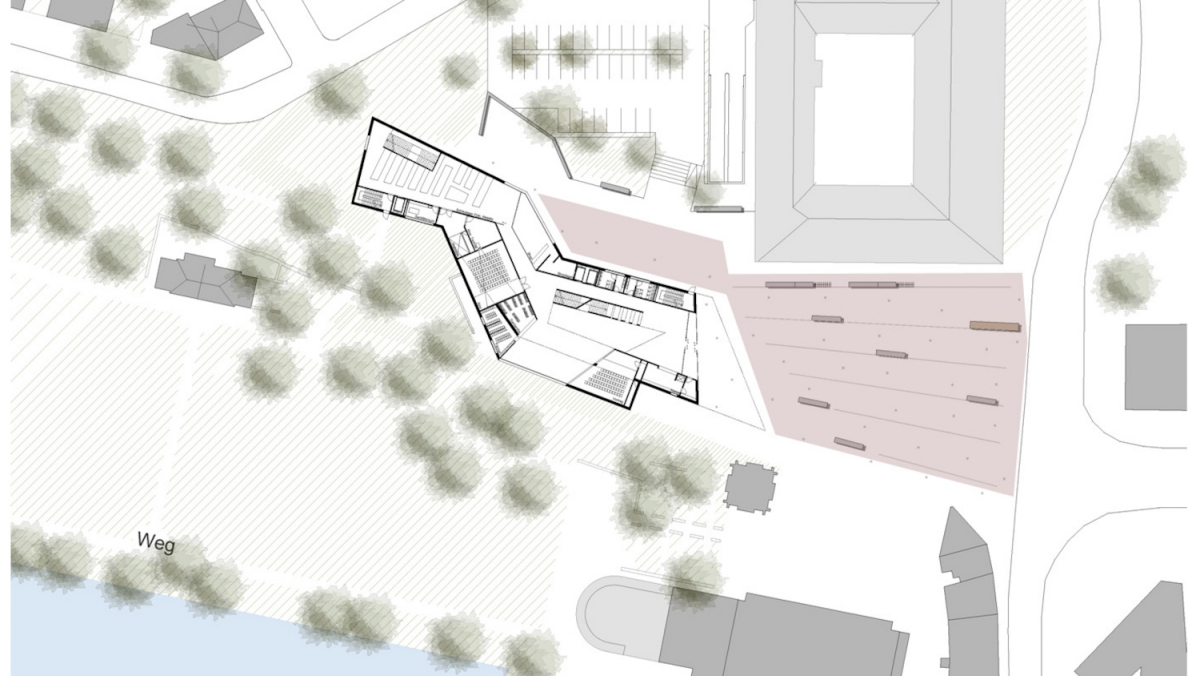


inner city of weimar with its historic center of neo-classical buildings and perimeter block developments

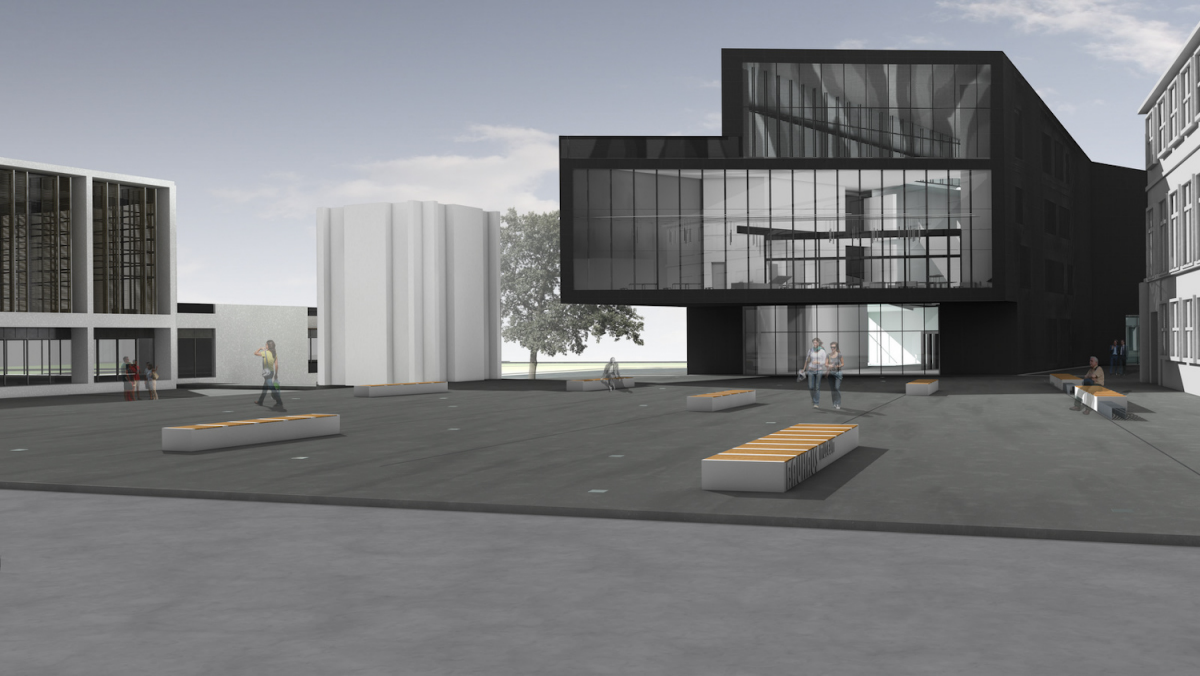


the quarter provides some essential visual orientation-axes which formed the concept. the concepts main idea is the adjustment of these axes to get a dynamic and solitary structure that could persist at the composition of the surrounding great scaled structures. furthermore the new bauhaus should be a kind of contaminant like the bauhaus in 1919 was for weimar in terms of history.

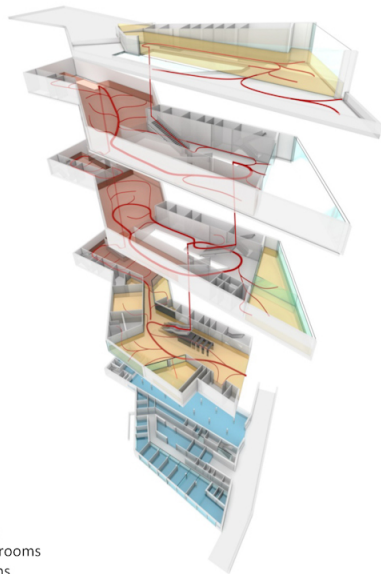
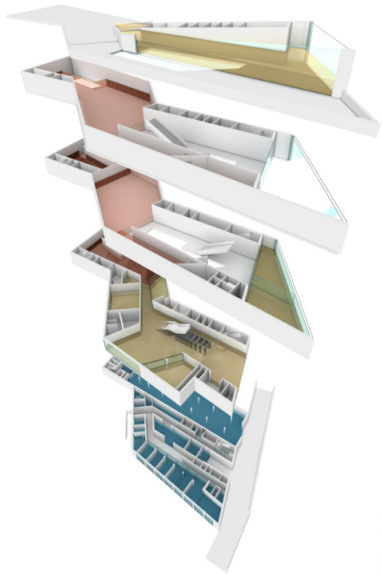




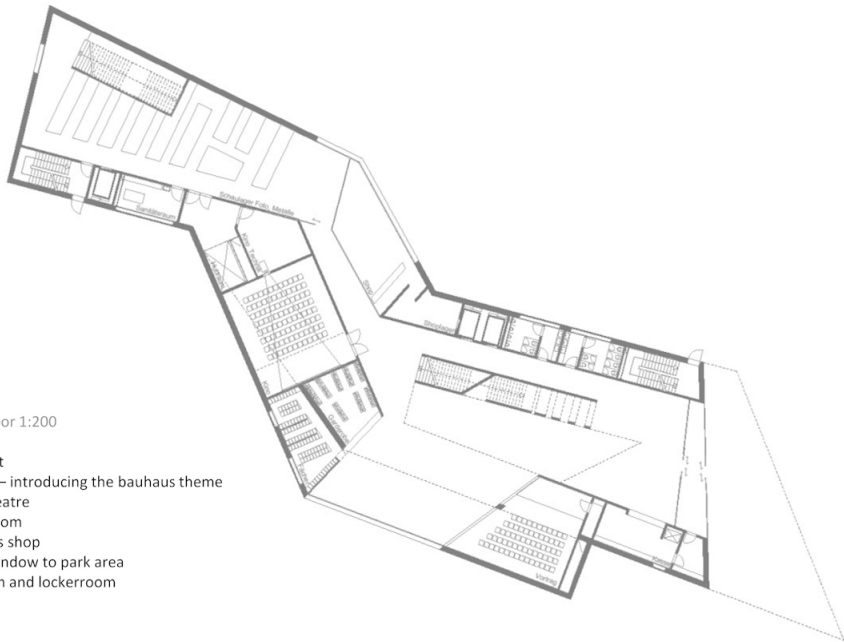
Weg







utilization scheme  
red - exhibition rooms  
yellow – mutiple used rooms  
blue – non-public rooms



groundfloor 1:200

foyer

cash point

blackbox – introducing the bauhaus theme

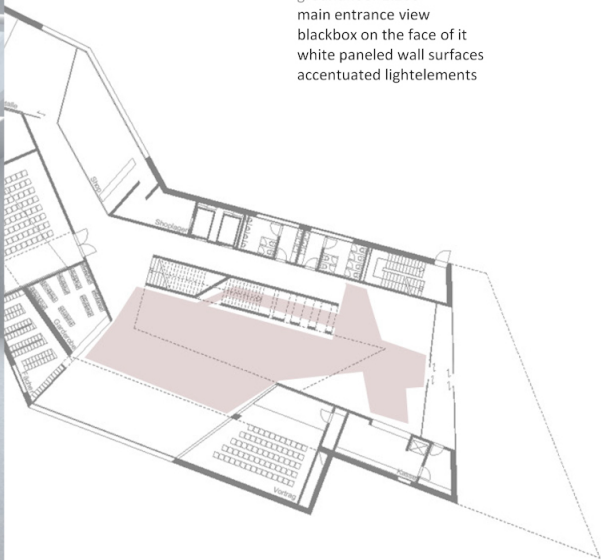
movie theatre

lecture room

museum's shop

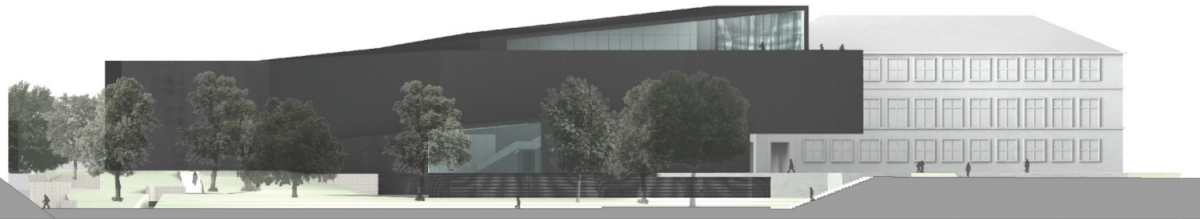
display window to park area

wardroom and lockerroom

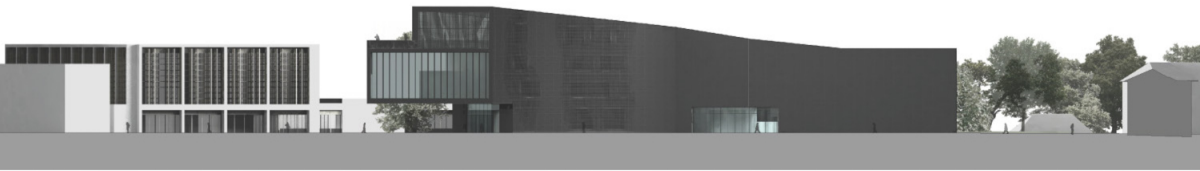


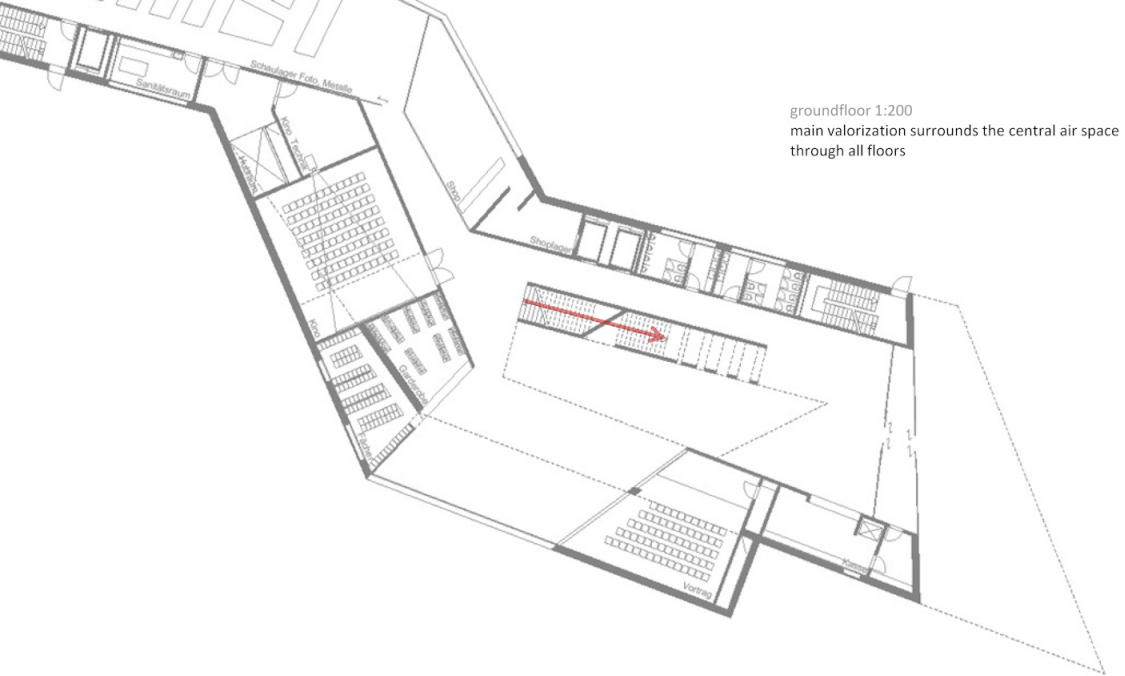
groundfloor 1:200  
main entrance view  
blackbox on the face of it  
white paneled wall surfaces  
accentuated lightelements

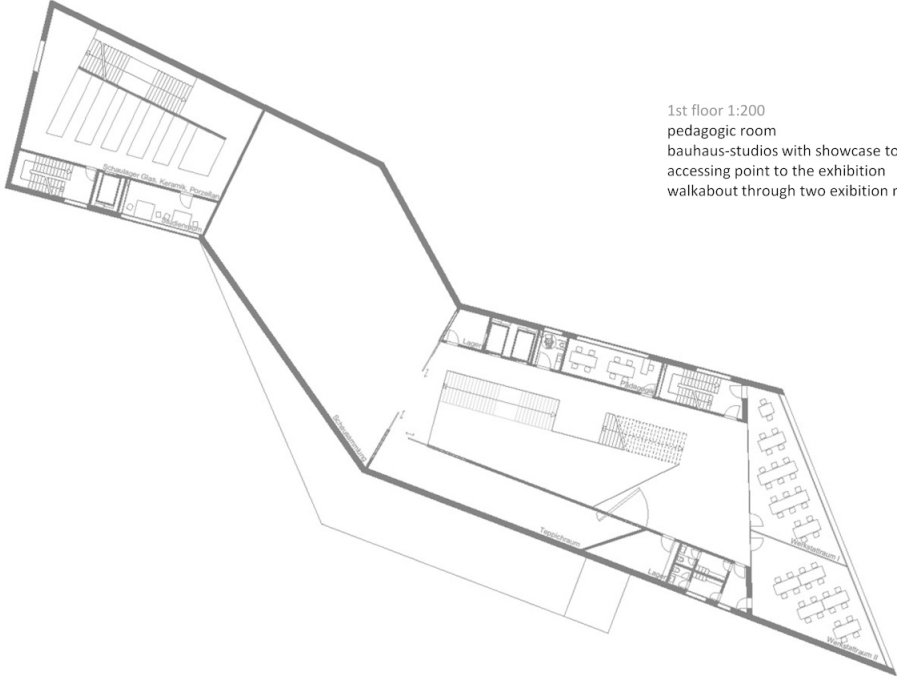
south view



north view







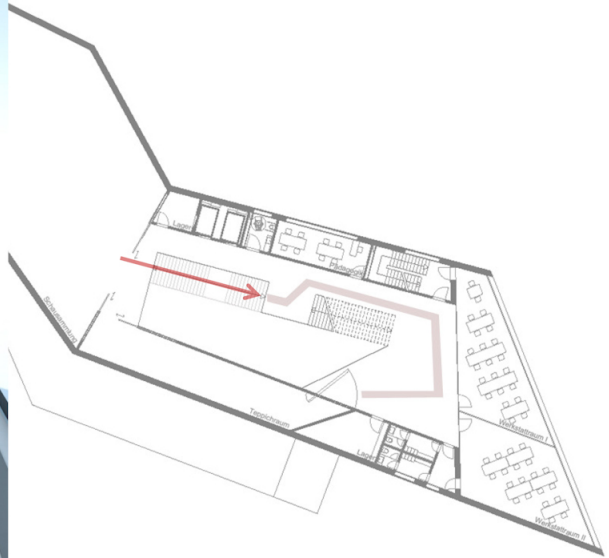
1st floor 1:200

pedagogic room

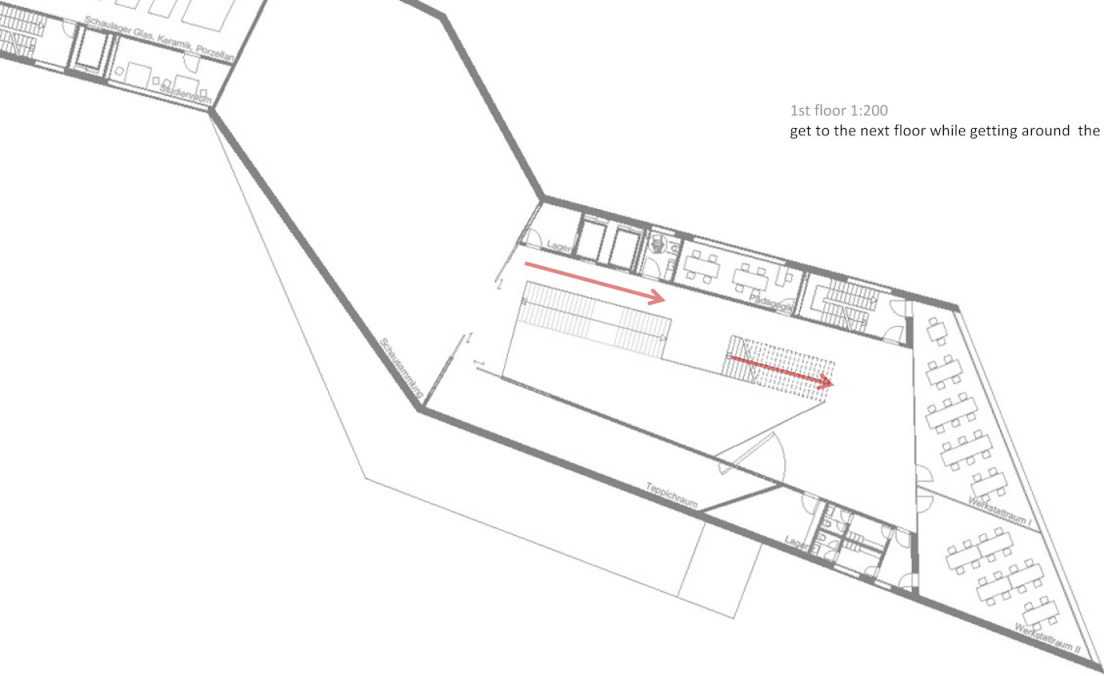
bauhaus-studios with showcase to the east

accessing point to the exhibition

walkabout through two exhibition rooms

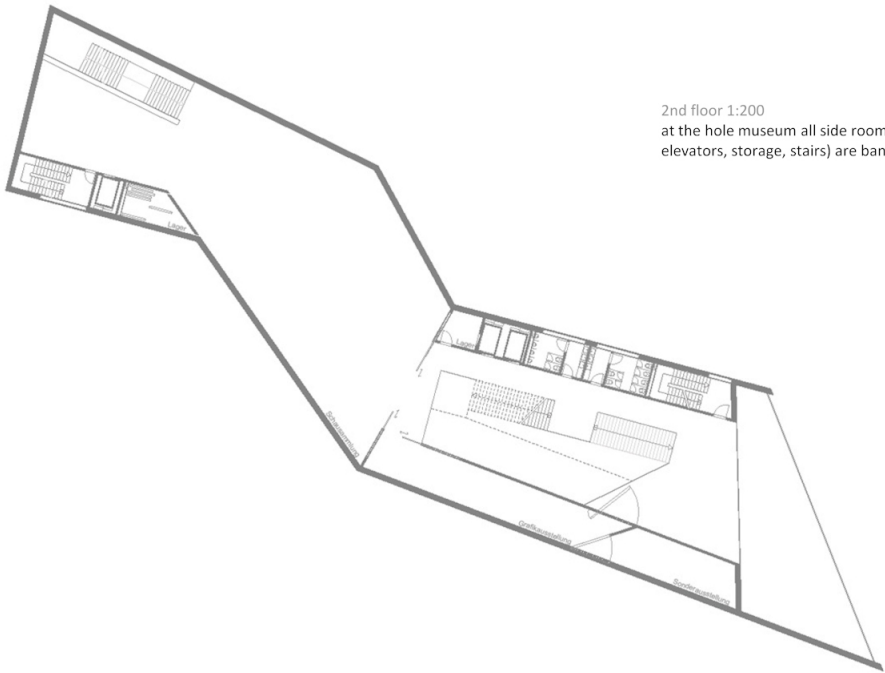






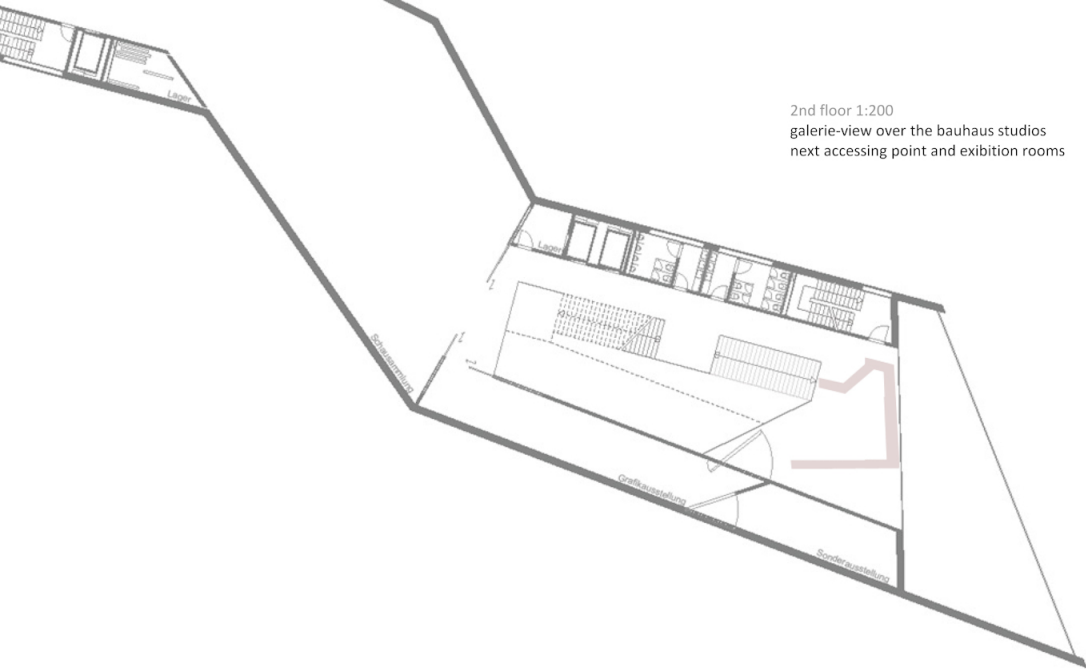
1st floor 1:200

get to the next floor while getting around the atrium



2nd floor 1:200

at the hole museum all side rooms (restrooms, elevators, storage, stairs) are band together

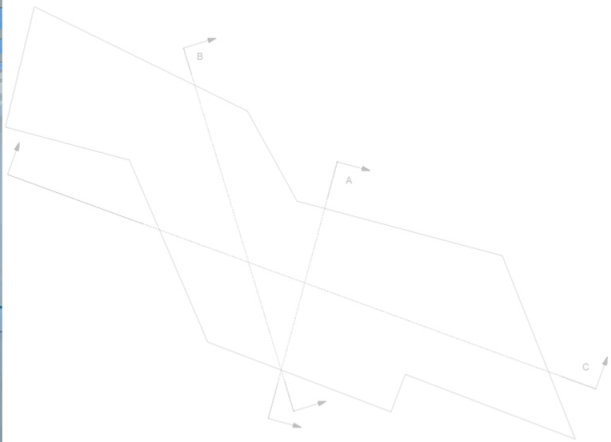


2nd floor 1:200  
galerie-view over the bauhaus studios  
next accessing point and exhibition rooms

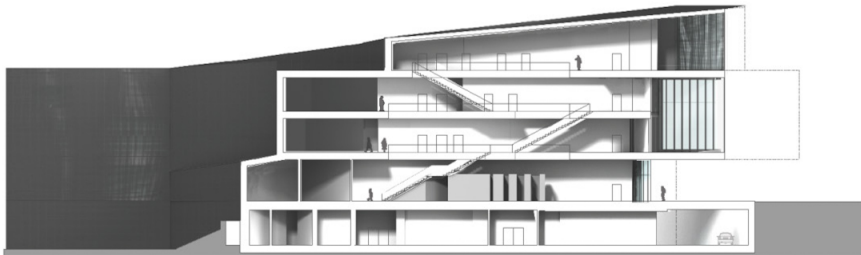




view from 2nd floor



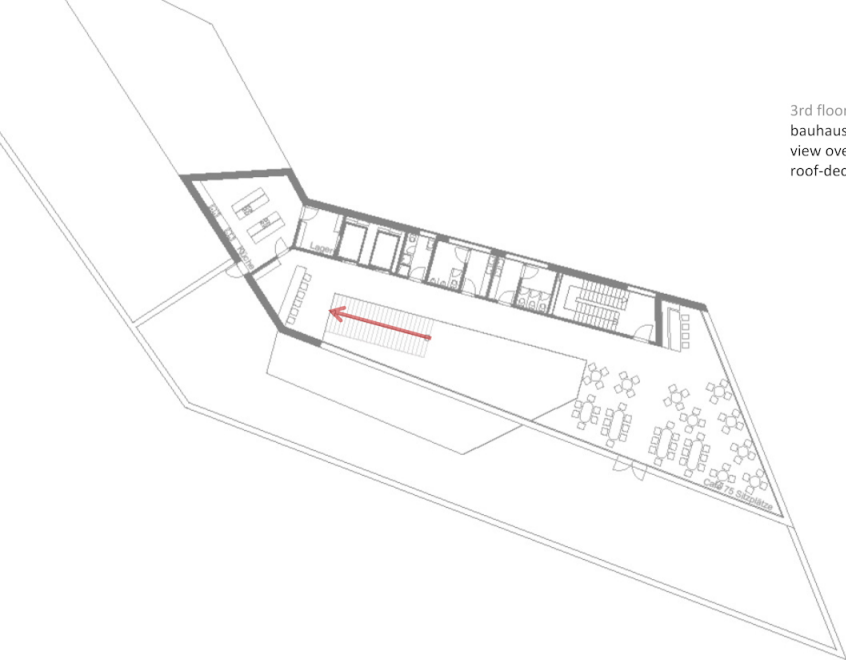
sectional view a-a



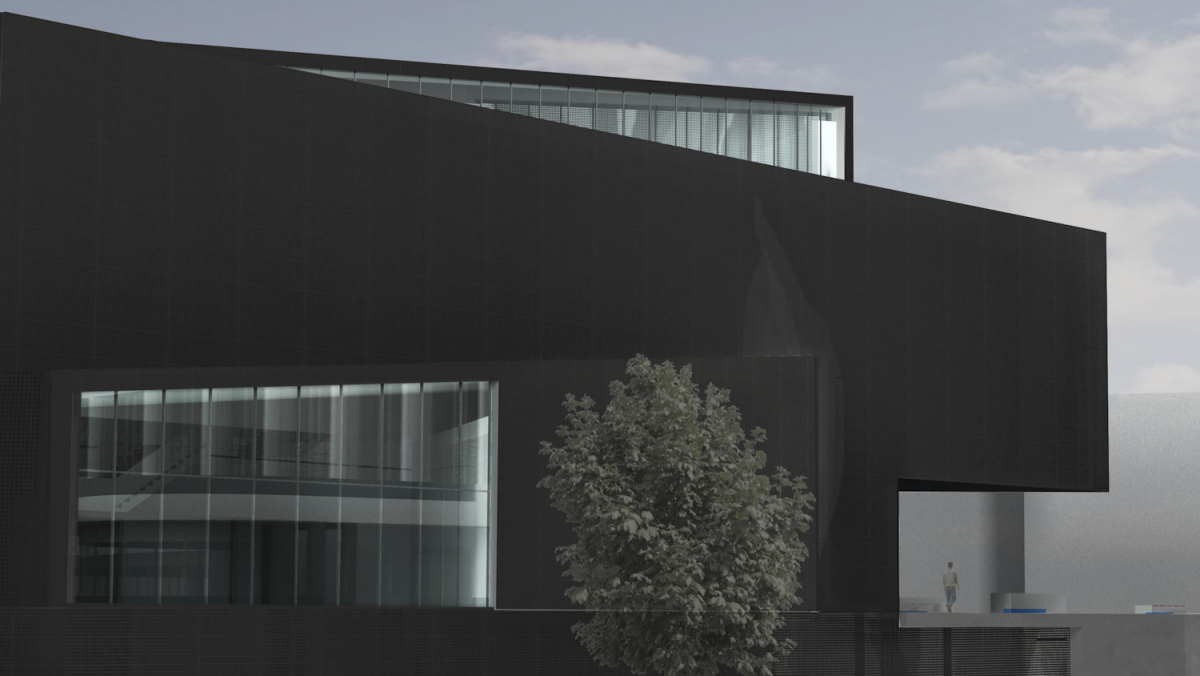
sectional view b-b

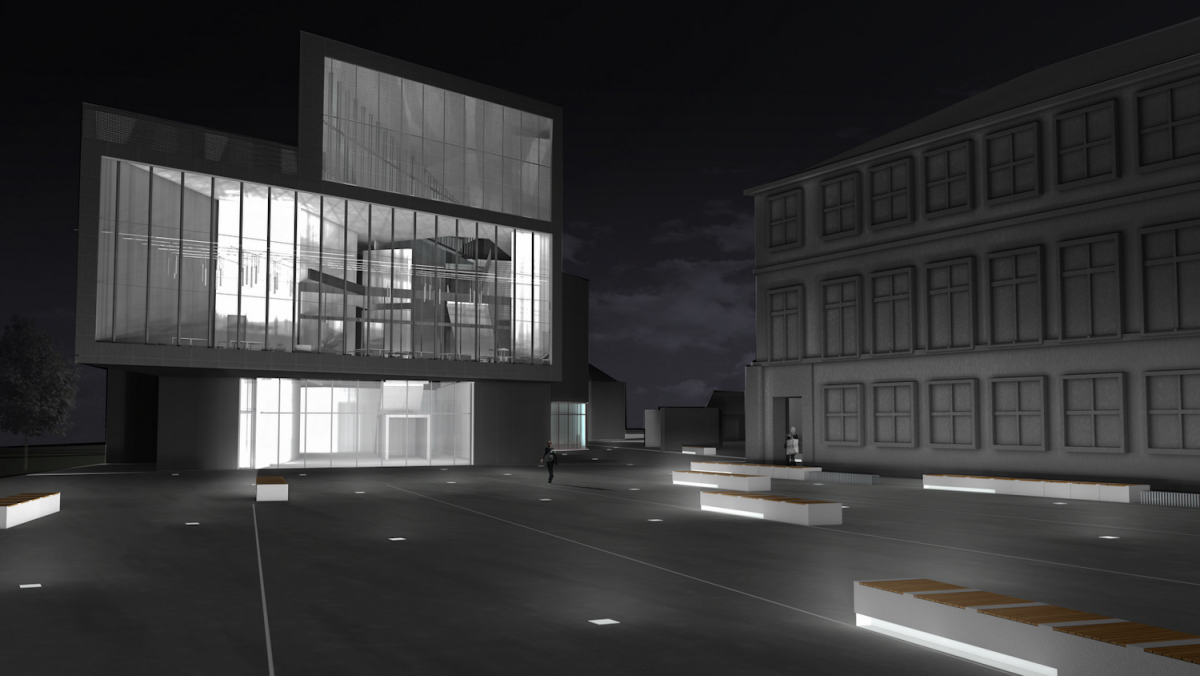


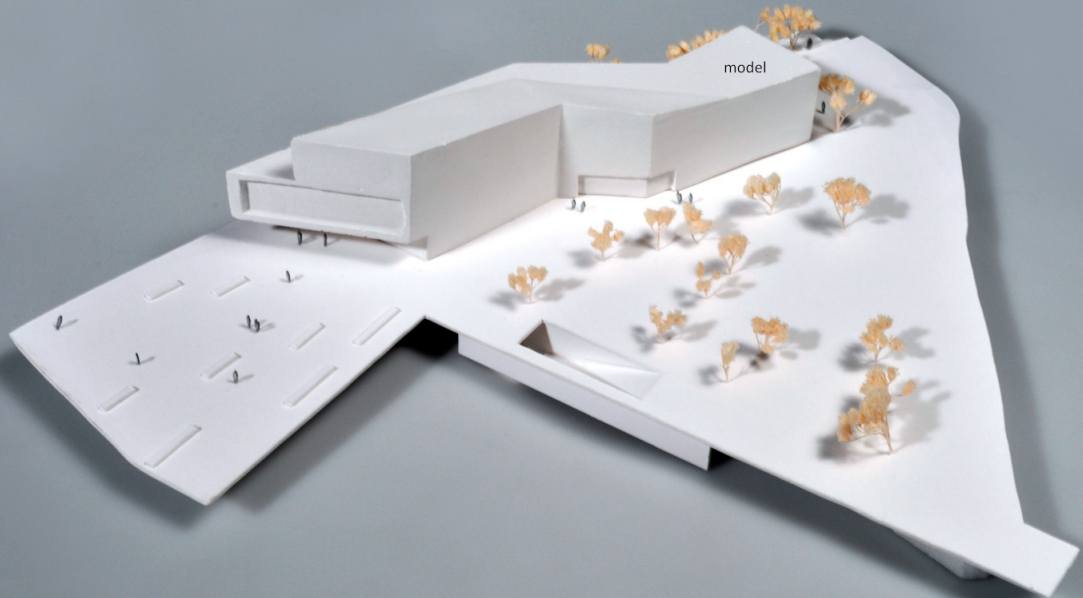
3rd floor 1:200  
bauhaus-café  
view over the inner city of weimar  
roof-deck at a height of 20m

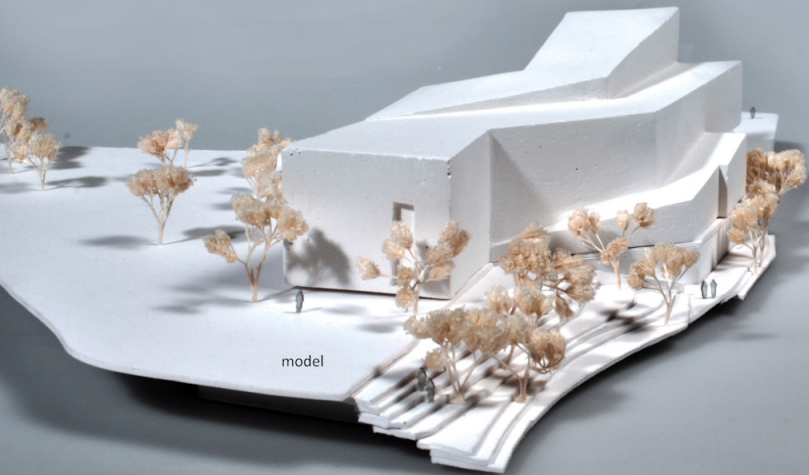












model



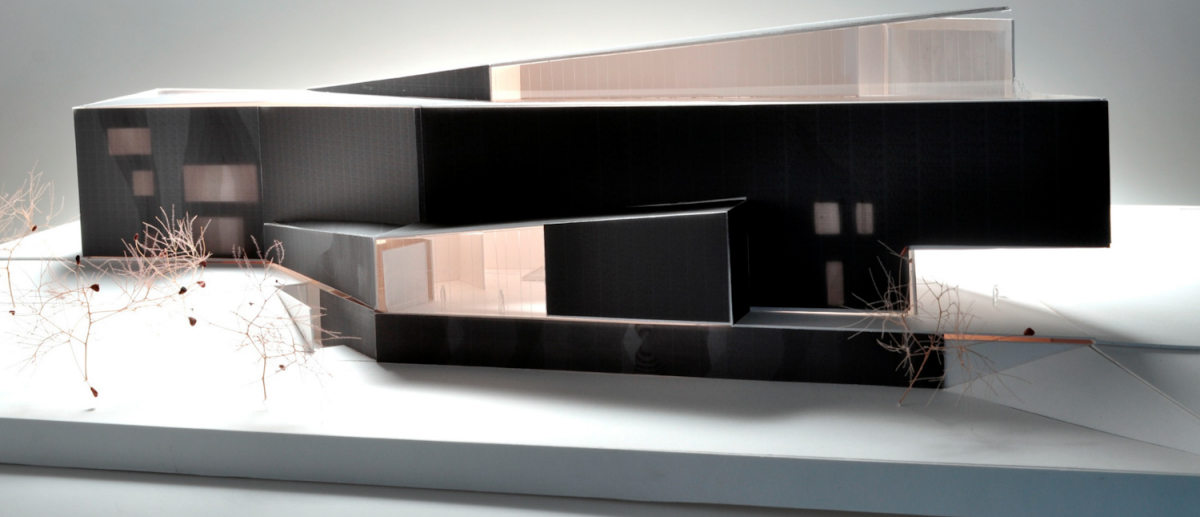
model

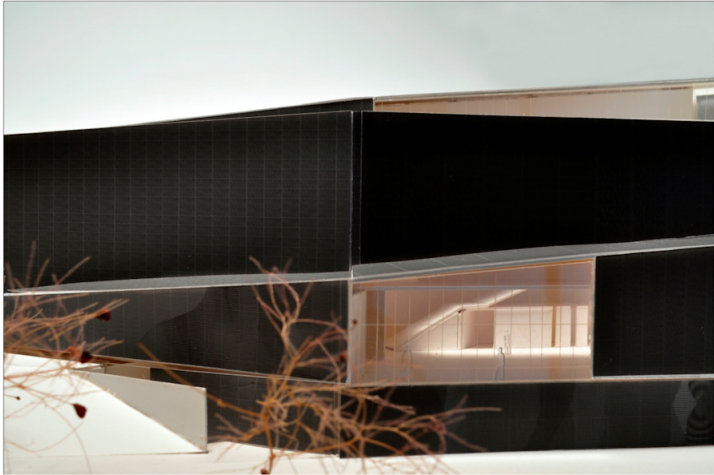


model



model





model

